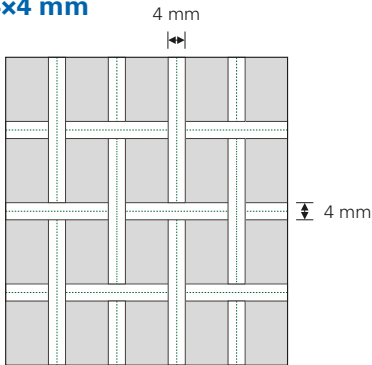


## JUMPING BED

## APPLICATION AREA & RANGE OF USAGE POSSIBILITIES

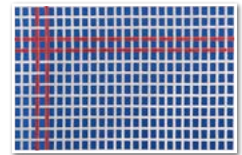
### 4x4 mm



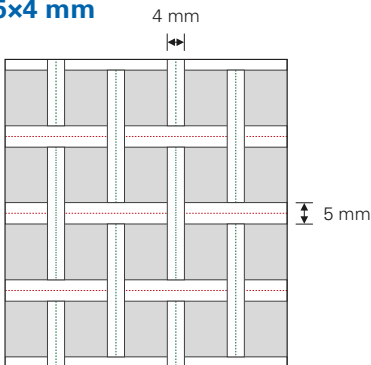
- Made of 4 mm wide woven nylon bands sewn lengthwise and 4 mm wide crosswise.
- It offers the maximum permissible jumping performance according to FIG rules. Used in almost all trampoline competitions worldwide..
- **Application area:** Competition, High performance & popular sports

#### Range of usage possibilities

- Ultimate, Ultimate „Freestyle“
- Ground trampoline Grand Master Indoor, Ground trampoline Grand Master „Freestyle“ Indoor
- Teamgym, Teamgym „Freestyle“



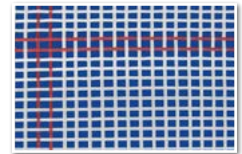
### 5x4 mm



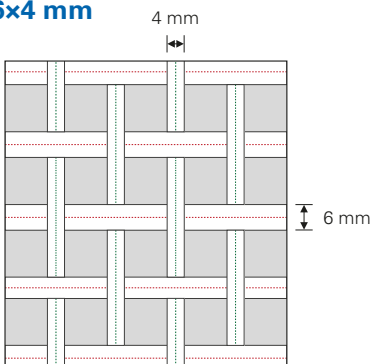
- Made of 4 mm wide woven nylon bands sewn lengthwise and 5 mm wide crosswise.
- **Application area:** High performance & popular sports

#### Range of usage possibilities

- Ultimate, Ultimate „Freestyle“
- Ground trampoline Grand Master Indoor, Ground trampoline Grand Master „Freestyle“ Indoor



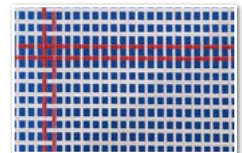
### 6x4 mm



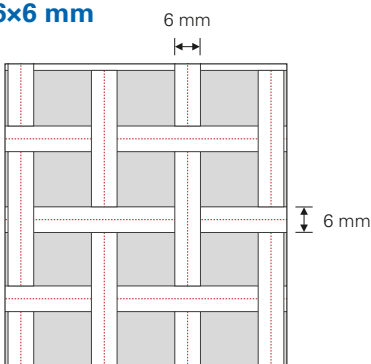
- Made of 4 mm wide woven nylon bands sewn lengthwise and 6 mm wide crosswise.
- **Application area:** High performance & popular sports

#### Range of usage possibilities

- Ultimate, Ultimate „Freestyle“
- Ground trampoline Grand Master Indoor, Ground trampoline Grand Master „Freestyle“ Indoor



### 6x6 mm



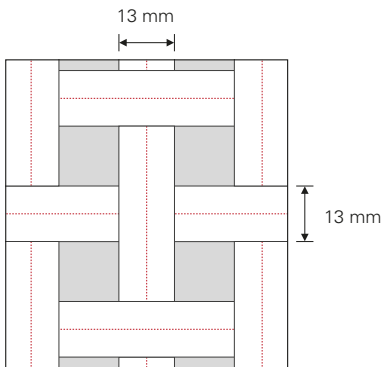
- Made of 6 mm wide woven nylon bands sewn lengthwise and crosswise.
- **Application area:** High performance & popular sports

#### Range of usage possibilities

- Ultimate, Ultimate „Freestyle“
- Doppel-Minitramp Ultimate
- Ground trampoline Grand Master Indoor, Ground trampoline Grand Master „Freestyle“ Indoor
- Minitramp 112/125, Minitramp Open-End, Teamgym, Teamgym „Freestyle“



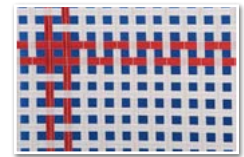
## 13 mm



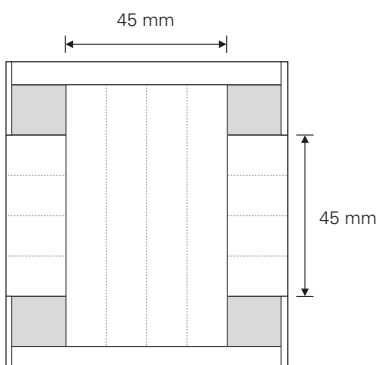
- Made of 13 mm wide woven nylon bands sewn lengthwise and crosswise.
- Allround-Jumping bed with a broad spectrum of performance and excellent spring characteristics.
- **Application area:** Popular sports, Therapy

### Range of usage possibilities

- Ultimate, Ultimate „Freestyle“
- Grand Master
- Master
- Ground trampoline Grand Master Indoor, Ground trampoline Grand Master „Freestyle“ Indoor
- Minitramp 112, Minitramp Open-End, Teamgym, Teamgym „Freestyle“



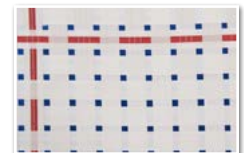
## 45 mm



- Made of 45 mm wide woven nylon bands sewn lengthwise and crosswise.
- Highly recommended for therapeutic purposes, as it offers a very soft and skin-friendly surface.
- **Application area:** Popular sports, Therapy

### Range of usage possibilities

- Grand Master
- Master



## School

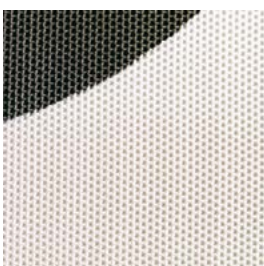


- Made of synthetic fabric (polyester)
- Contrary to the bed types with nylon bands and based on an uncomplicated production process, the school version is the most favourably priced variety.
- The only disadvantage: if it is damaged not repairable.
- **Application area:** Popular sports, Therapy

### Range of usage possibilities

- Grand Master
- Master

## Double perlon

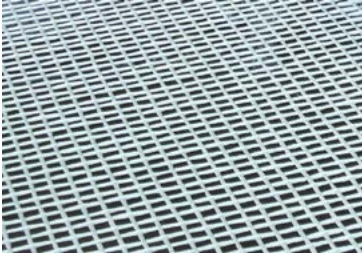


- Very robust with average throw performance
- **Application area:** School- and Popular sports

### Range of usage possibilities

- Minitramp 112/125
- Booster Board, Booster Board „Freestyle“

## Polyester fabric

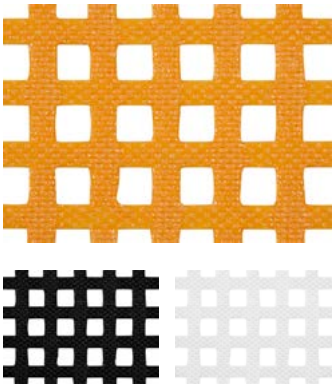


- Hand-woven high performance jumping bed
- **Application area:** particularly suitable for all freestyle disciplines

### Range of usage possibilities

- Fivesquare 5<sup>2</sup>

## PVC-coated fabric



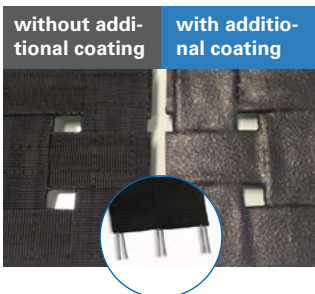
\* only available for Ground trampoline Outdoor and Ground trampoline „Freestyle“ Outdoor

- Jumping bed made of PVC-coated fabric, specially designed for outdoor use
- UV light-resistant, water-resistant, ready for use all year round, not vandalism-proof
- Offers a good performance and a balanced spring behaviour
- Easy cleaning
- Available colours: yellow, black\*, white\*

### Range of usage possibilities

- Ground trampoline Outdoor, Ground trampoline „Freestyle“ Outdoor
- Trampoline Track „Stationär“ & „Vario“
- Underwater Trampoline
- Kids Tramp „Kindergarten“
- Sport-Thieme Adventure-Tramp
- Wehrfritz FUN XL, Wehrfritz Ground trampoline round
- Trampoline sets
- Customized fabrications

## Wire reinforced belt fabric



- Jumping bed is made of sixfold wire reinforced belt fabric
- Specially designed for the unattended and freely accessible playground area
- offers a high level of vandalism safety, flame retardant, UV light resistant, all-season use
- Optional: additional coating for even more durability

### Range of usage possibilities

- Kids Tramp „Playground“
- Kids Tramp Track
- Sport-Thieme Adventure Tramp
- Wehrfritz FUN XL / Ground trampoline round