

## All Types of Bed at a Glance

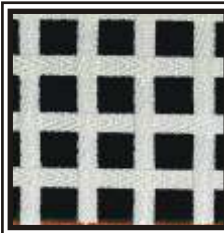


### **Bed Type 4 X 6 mm**

This jumping bed is made of 4 mm and 6 mm wide woven nylon bands sewn lengthwise and crosswise respectively. Because of the minimal air resistance caused by bouncing, it offers the high performance required for competitions.

#### **Used for:**

only Grand Master Exclusiv frame (more info at [www.eurotramp.com](http://www.eurotramp.com) - FAQ)



### **Bed Type 6 mm**

The bed is the predecessor of the 4 X 6 mm and has 6 mm wide woven nylon bands both lengthwise and crosswise. Because of the width of the bands, it can be produced at a lower cost. The 6 mm bed has a lower level of performance than the 4 X 6 mm model but can be also used in competitions, according to FIG.

#### **Used for:**

only Grand Master Exclusiv frame (more info at [www.eurotramp.com](http://www.eurotramp.com) - FAQ), Minitramp "Euroteam", Open-End-Minitramp

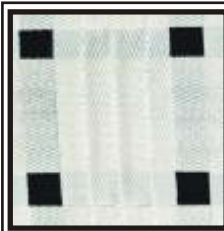


### **Bed Type 13 mm**

A well-proven type of bed; combining comfort with the necessary power and used for nearly all types of apparatus. Highly recommended as a standard bed with a broad spectrum of performance and excellent spring characteristics.

#### **Used for:**

Grand Master Exclusiv, Grand Master Series, Master Series, Double-Minitramp Series, Minitramps, Open-End-Minitramps, Minitramp "Euroteam"

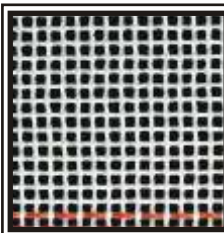


### **Bed Type 45 mm**

Also a well-proven type of bed, offering a high degree of comfort and durability at low-level performance. This bed is highly recommended for therapeutic purposes, as it offers a very soft and skin-friendly surface.

#### **Used for:**

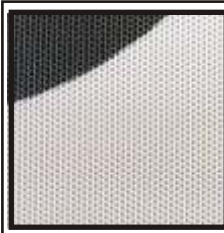
Grand Master Exclusiv, Grand Master Series, Master Series



**Bed Type "School"** Contrary to the bed types with nylon bands and based on an uncomplicated production process, the school version is the most favourably priced variety of bed offering high performance and a very harmonic and balanced spring behaviour. The only disadvantage: if it is damaged, the bed can only be repaired to a limited degree.

#### **Used for:**

Grand Master Exclusiv, Grand Master Series, Master Series, Trampoline tracks

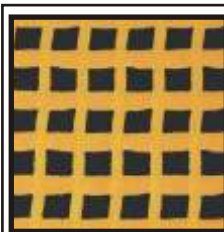


### **Bed Type "Ganzperlon"**

A standard bed used for Minitramps. Very robust with average throw performance.

#### **Used for:**

Minitramps



### **Bed Type PVC-beschichtetes Gewebe (outdoor)**

In our range, we have a bed made from PVC coated fabric, especially for outdoor use. The material is very resistant to weather and UV light. The bed demonstrates a good performance and offers balanced spring behaviour. The bed can be repaired at a very reasonable price, even for large-scale damage.

#### **Used for:**

Grand Master Exclusiv, Grand Master Series, Master Series, all outdoor trampolines, Trimm-Tramp, Trampoline tracks, custom made products